

The background features abstract, overlapping green geometric shapes in various shades of lime and forest green, creating a dynamic, modern look. The shapes are primarily triangular and polygonal, some with thin white outlines.

Stephen F. Austin High School

Home of the Mighty Mustangs!

WELCOME BACK!

Staff Development Norms

1. Be Emotionally and Intellectually Present
2. Universal call to attention
3. Be Positive
4. Participate and Learn

Summer at the Movies Challenge

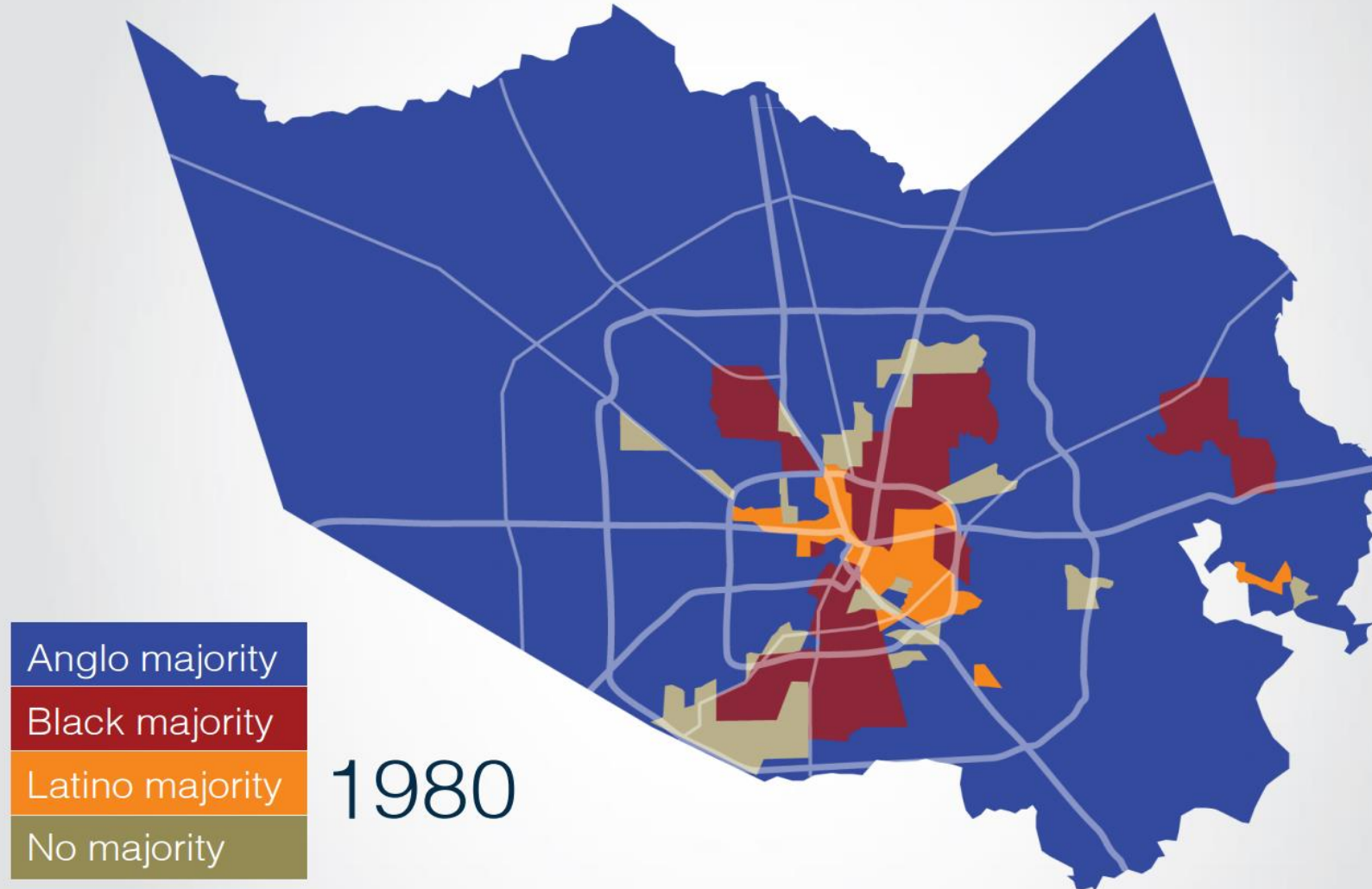
► Bryan Bordelon

Circle the Wagon-Introductions

- ▶ State your name
- ▶ Department
- ▶ Name of your favorite teacher
- ▶ One word that describes them

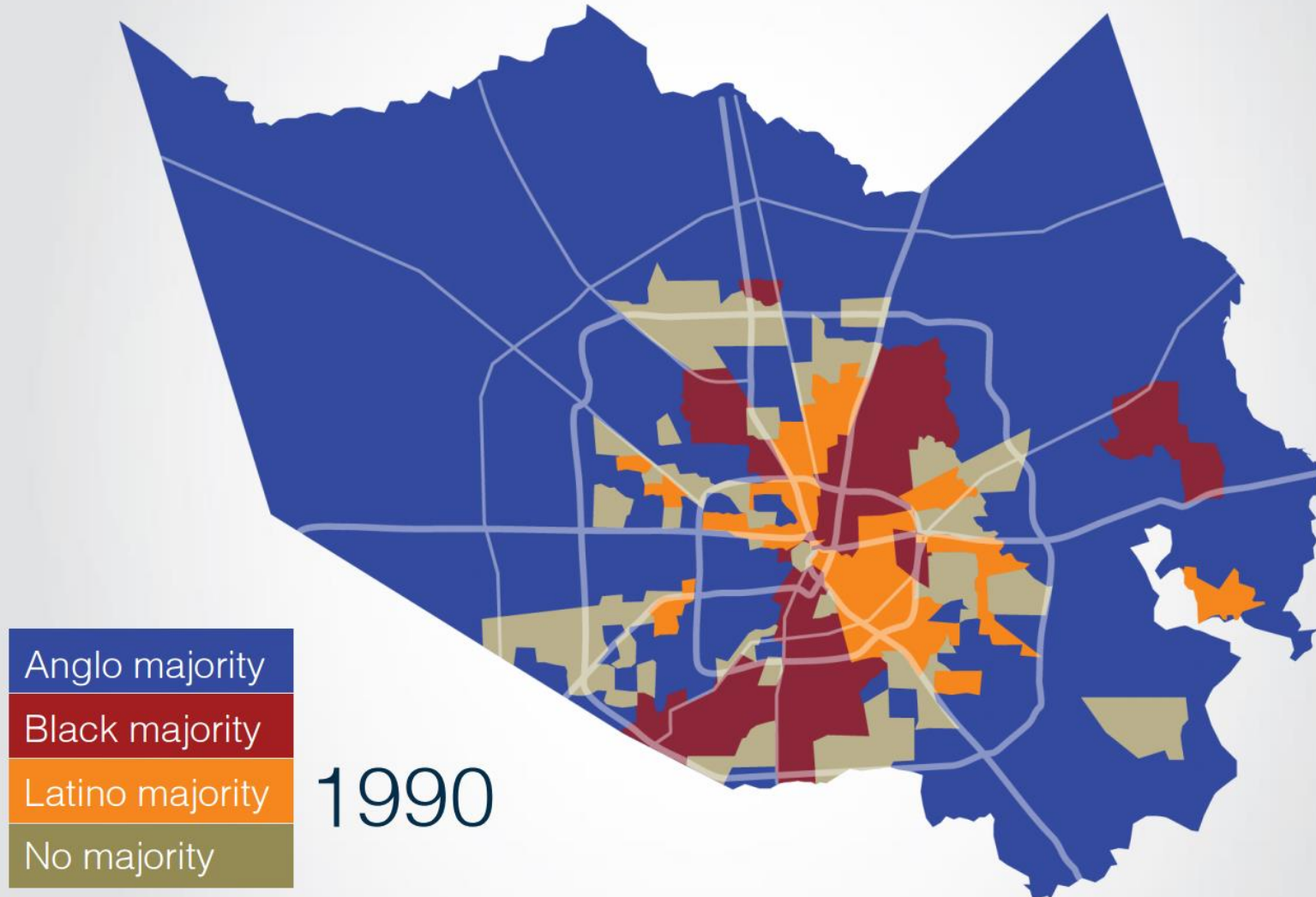
80's Rock! Atari!

HARRIS COUNTY TOTAL POPULATION

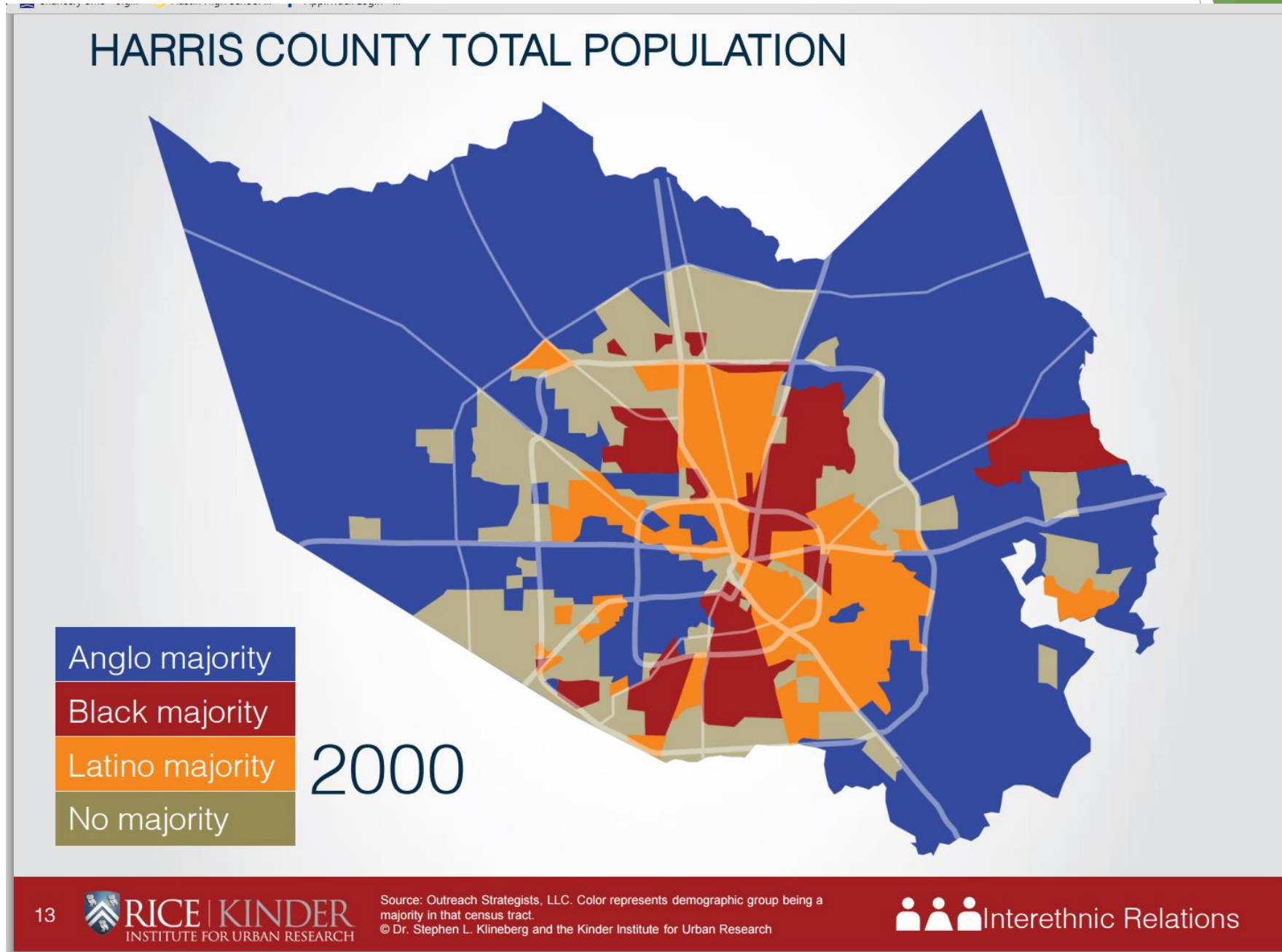


90's DJ Screw and Bill Clinton

HARRIS COUNTY TOTAL POPULATION

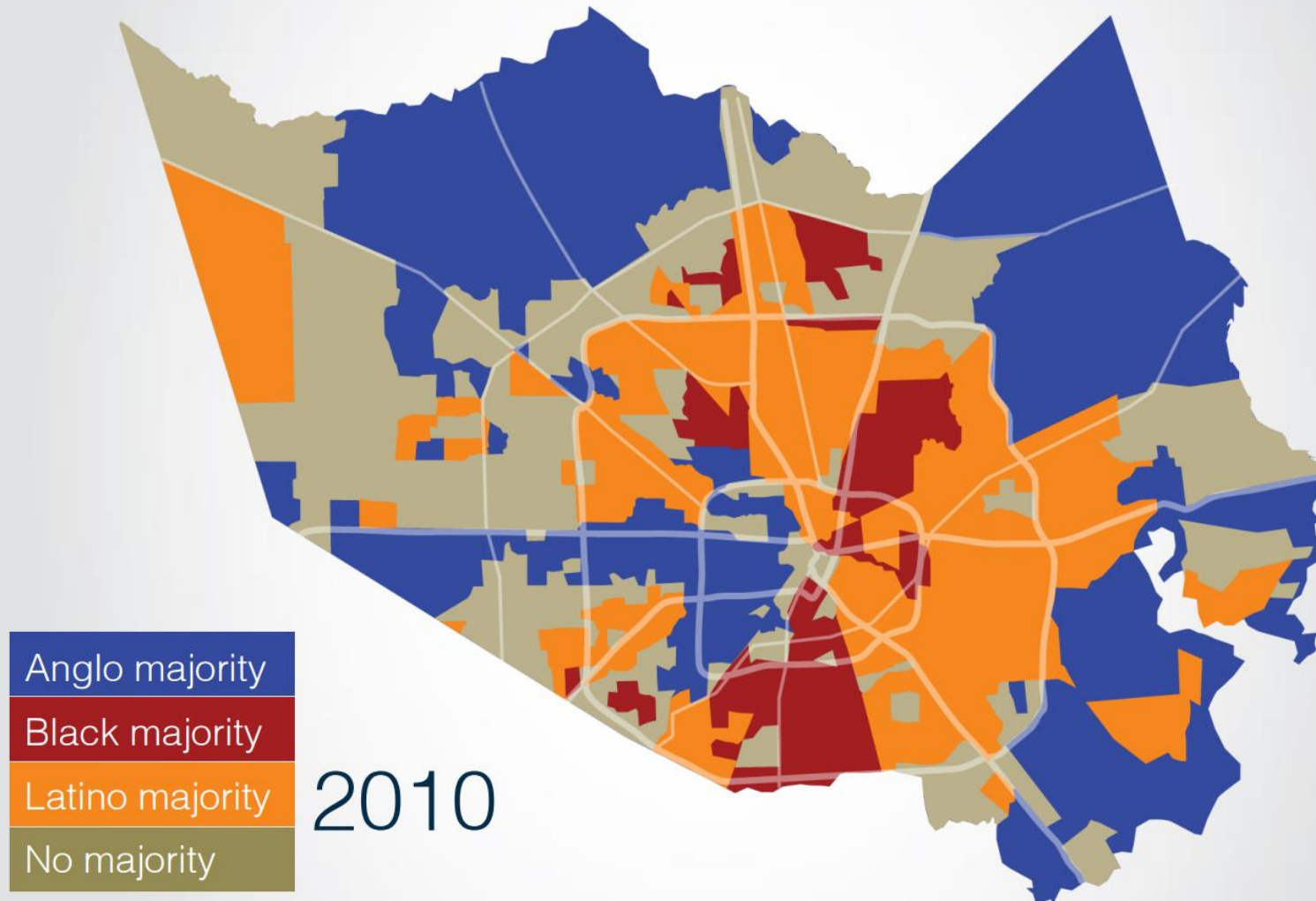


Flip Phones and original iPods

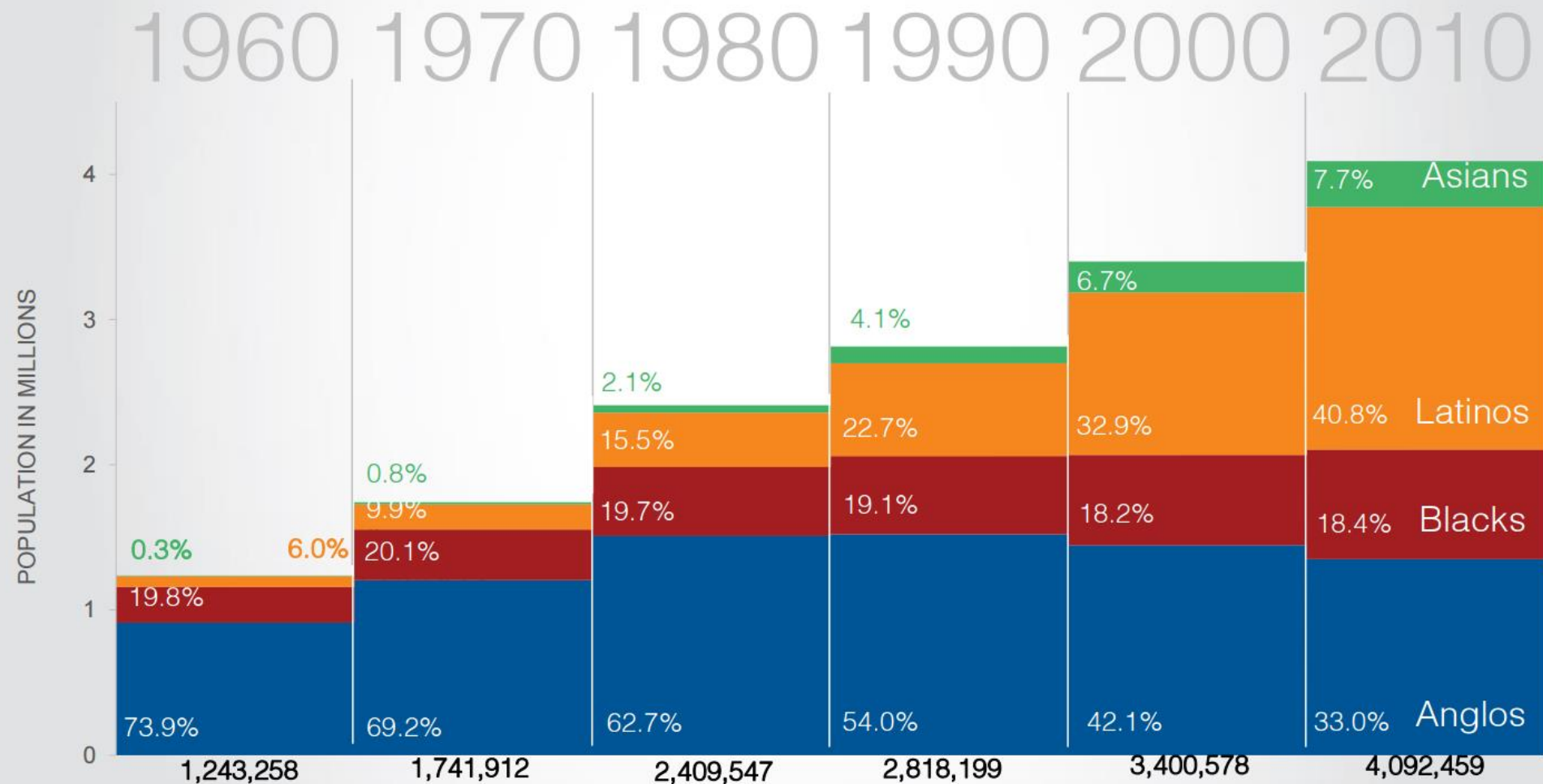


I'm getting old...

HARRIS COUNTY TOTAL POPULATION

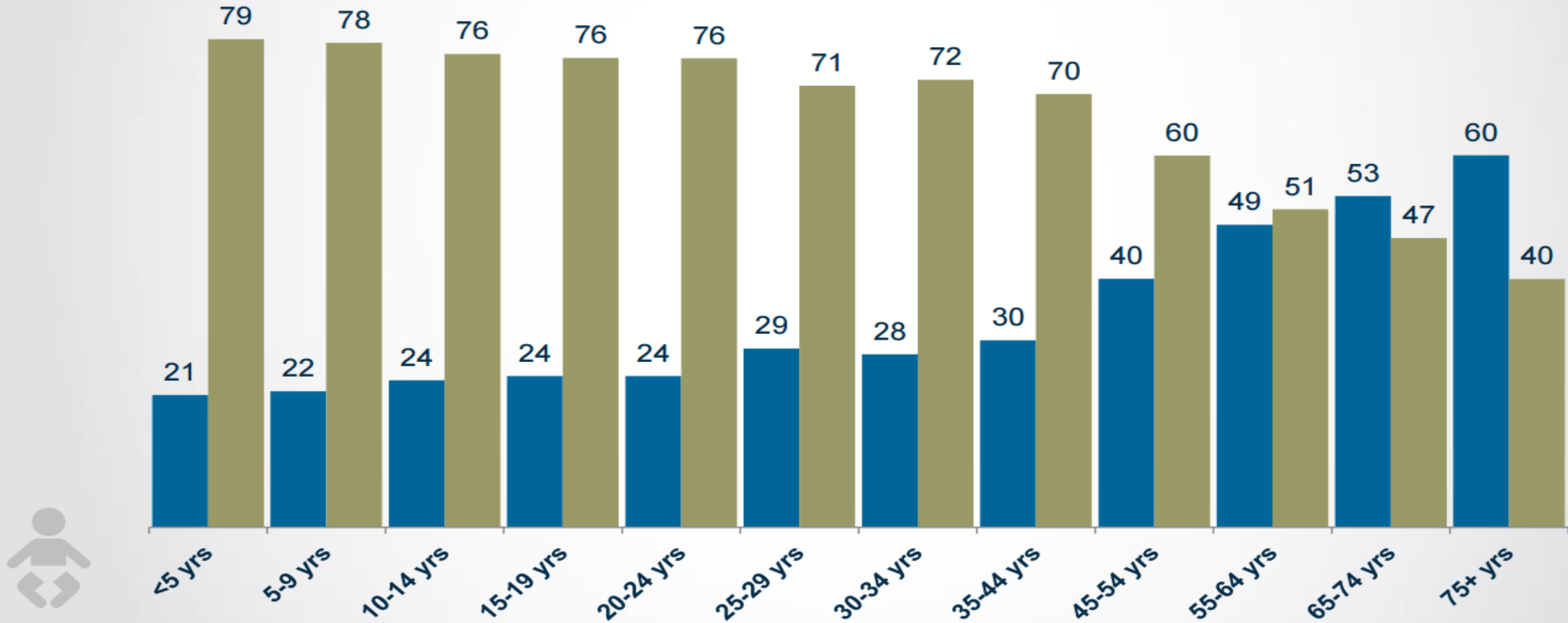


THE DEMOGRAPHIC TRANSFORMATIONS OF HARRIS COUNTY (1960-2010)

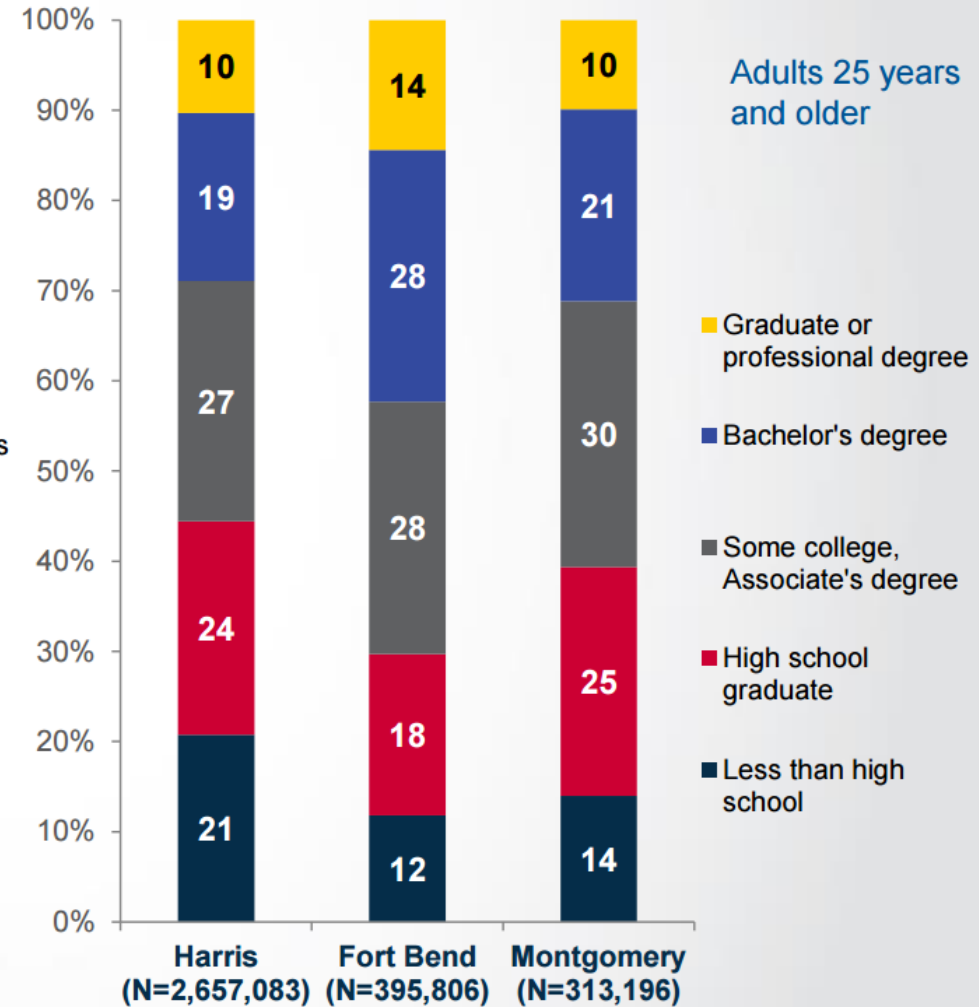
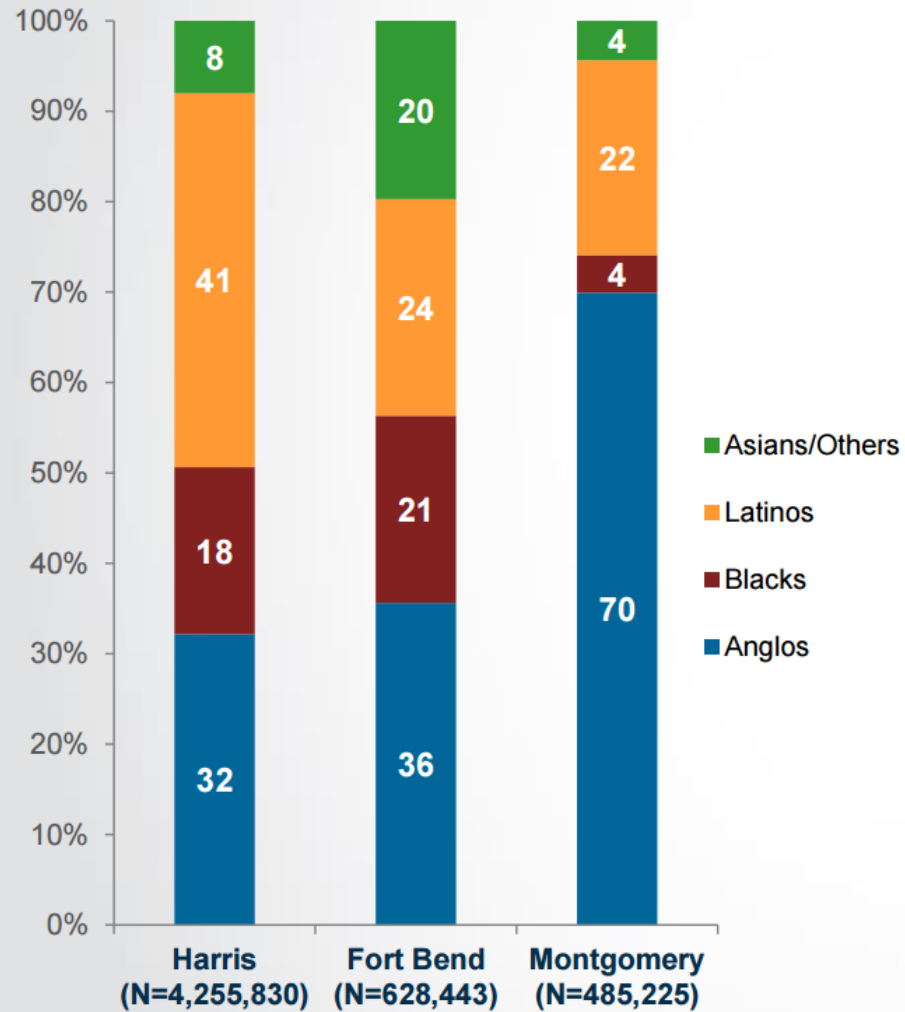


PERCENT OF THE POPULATION BY AGE GROUP AND ETHNICITY IN HARRIS COUNTY (2013)

■ Non-Hispanic Whites ■ All Others



ETHNICITY AND EDUCATION IN HOUSTON'S THREE LARGEST COUNTIES (2013)



Austin Demographics

- ▶ 1841 students
- ▶ 84.2% economically disadvantaged
- ▶ 21.2% ELL
- ▶ 18.7% Mobility Rate

2014/2015 STAAR Data Comparison Index

Subject	# of Students 2014 Tested	2014 % Met Standard	# of Students 2015 Tested	2015 % Met Standard
English 1 & 2	1285	46%	1536	52%
Algebra	514	73%	521	75%
Biology	568	74%	585	79%
U.S. History	337	88%	348	86%
ALL STUDENTS	2704	62% (1,667)	2,990	65% (1,945)

2015 STAAR Data Subgroups-Index 1

Subject	Met Standard	African American (107 total tests)	Hispanic (2,051 total tests)	SPED (181 total tests)	ELL (808 total tests)
English 1 & 2	52%	62%	51%	20%	29%
Algebra	75%	84%	74%	50%	62%
Biology	79%	96%	78%	48%	59%
Social Studies	86%	100%	86%	75%	63%
ALL STUDENTS	65%	77%	65%	33%	43%